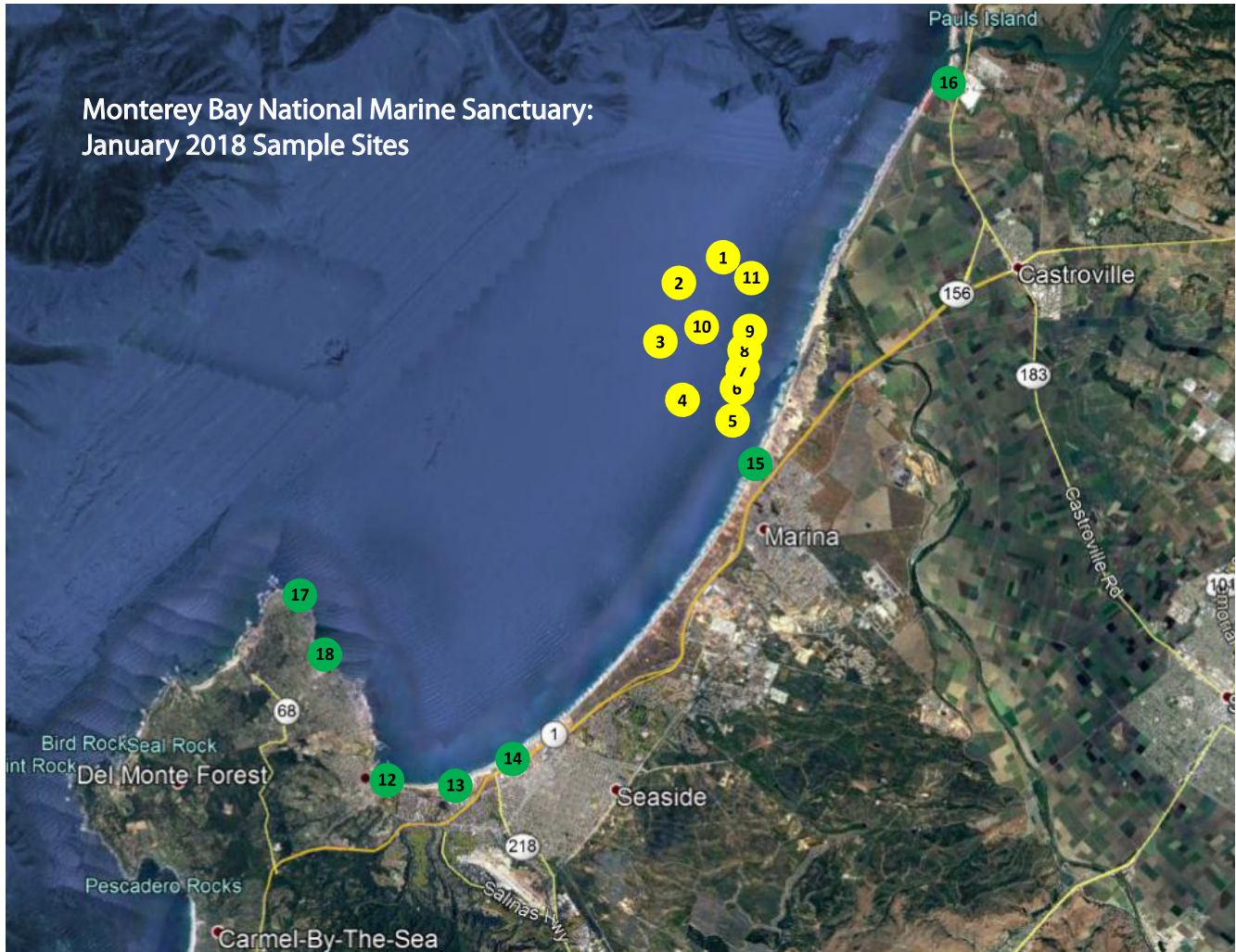




WATER SAMPLING RESULTS

From Untreated Wastewater Release to Ocean



SITE KEY

Sites 1-11: RSW surrounding outfall

Site 12: Monterey Wharf #2

Site 13: Del Monte Beach at Tide Ave

Site 14: Seaside State Beach at Bay St

Site 15: Marina State Beach at Reservation Rd

Site 16: Salinas River State Beach,

Moss Landing at Sandholt Lot

Site 17: Pacific Grove at Ocean View Ave and Acropolis St

Site 18: Pacific Grove at Lover's Point

From County of Monterey Health Department

1/22/2018 5:31:00 PM | www.mtyhd.org/beach

Beach Closure Lifted: Sewage Spill - Rain Advisory Posted for All Monterey County Beaches

The Beach Closures due to the sewage spill have been lifted. However, all Monterey County Beaches have been posted with a rain advisory due to the current weather. The public is advised not to have ocean water contact for three days after today's rain event.



WATER SAMPLING RESULTS cont.

From Untreated Wastewater Release to Ocean

SATURDAY, JANUARY 20, 2018 SAMPLES

Sites 1-11: Receiving Surface Water (RSW) surrounding the outfall

All samples below the Ocean Plan limits for Total Coliform, E. coli, and Enterococcus

Offshore Results Summary

Greatest observed Total Coliform—100 MPN/100 mL (limit 10,000 MPN/100 mL)

Greatest observed E. coli—none detected (limit 400 MPN/100 mL)

Greatest observed Enterococcus—30 MPN/100 mL (limit 104 MPN/100 mL)

Sites 12-16: Area beaches*

1 of 5 samples exceeded required limits for Enterococcus (Monterey Wharf #2)

Greatest observed Total Coliform—644 MPN/100 mL (limit 10,000 MPN/100 mL)

Greatest observed E. coli—175 MPN/100 mL (limit 400 MPN/100 mL)

Greatest observed Enterococcus—108 MPN/100 mL (limit 104 MPN/100 mL) Monterey Wharf #2

Site 12 also exceeds 30-day geometric mean limit of 35 MPN/100mL

SUNDAY, JANUARY 21, 2018 SAMPLES

Sites 12-18: Area beaches*

All samples below the Ocean Plan limits for Total Coliform, E. coli, and Enterococcus

Site 12 still exceeds 30-day geometric mean limit of 35 MPN/100mL

***Area Beaches**

Site 12: Monterey Wharf #2

Site 13: Del Monte Beach at Tide Ave

Site 14: Seaside State Beach at Bay St

Site 15: Marina State Beach at Reservation Rd

Site 16: Salinas River State Beach, Moss Landing at Sandholt Lot

Site 17: Pacific Grove at Ocean View Ave and Acropolis St - not tested Saturday due to unsafe high tides

Site 18: Pacific Grove at Lover's Point - not tested Saturday due to unsafe high tides

Site map available on page 1